

I love you, China



Special Edition in February—**New Coronavirus**



Producer: Xinhai Customs Service Team

CONTENTS



- 01** The Whole Nation is United In Fighting Against The New Coronavirus
- 02** Introduction of Measures to Facilitate Overseas Donation of Imported Medical Materials
- 03** Introduction to Key Points of Import Clearance of Donated Materials
- 04** Xinhai Provides Free Customs Clearance and Consultation Channels for Donors



PART
01

The Whole Nation is United In Fighting Against the New Coronavirus



The Whole Nation is United In Fighting Against the New Coronavirus

Nurses gave up their family for everyone

Medical staff have signed up to request to join the hospital's medical team to fight the new coronavirus and to contribute their share to the protection of people's health.



Domestic and overseas compatriots make voluntary donations

Caring people bought 11,000 disposable medical masks at their own expense and drove them to the county health and health bureau to donate them to the frontline staff fighting against epidemic prevention.



节后返回是否需要自我隔离14天? 普二十问, 你关心的都有

截至1月28日14时18分, 全国新型冠状病毒肺炎确诊人数4549例, 四川确诊90例, 成都确诊37例。

连日来, 新型冠状病毒感染的肺炎疫情牵动着全国人民的心, 一待解答。

近日, 针对新型冠状病毒肺炎疫情中公众关心的问题, 国内编辑给大家整理了以下大家最关心的问题。

The media rolled over the self-prevention measures

(From CCTV News, Urban Express, Beijing News, News Square)

Recently, many experts in China have interpreted the public's concerns about the new coronavirus pneumonia epidemic to reduce panic and prevent disease correctly.

The Whole Nation is United In Fighting Against the New Coronavirus



The majority of Party members at all levels of Party organizations are actively devote themselves in the frontline of their business.

Party organizations at all levels in the region regard defeating the epidemic as their current major political task and devote themselves to the front line of prevention and control of the epidemic as their mission and responsibility. We will give full play to the role of grassroots party organizations as battlegrounds and the vanguard and exemplary role of communist party members, mobilize grassroots party organizations and the majority of party members in an all-round way, and firmly stand at the forefront of epidemic prevention and control.

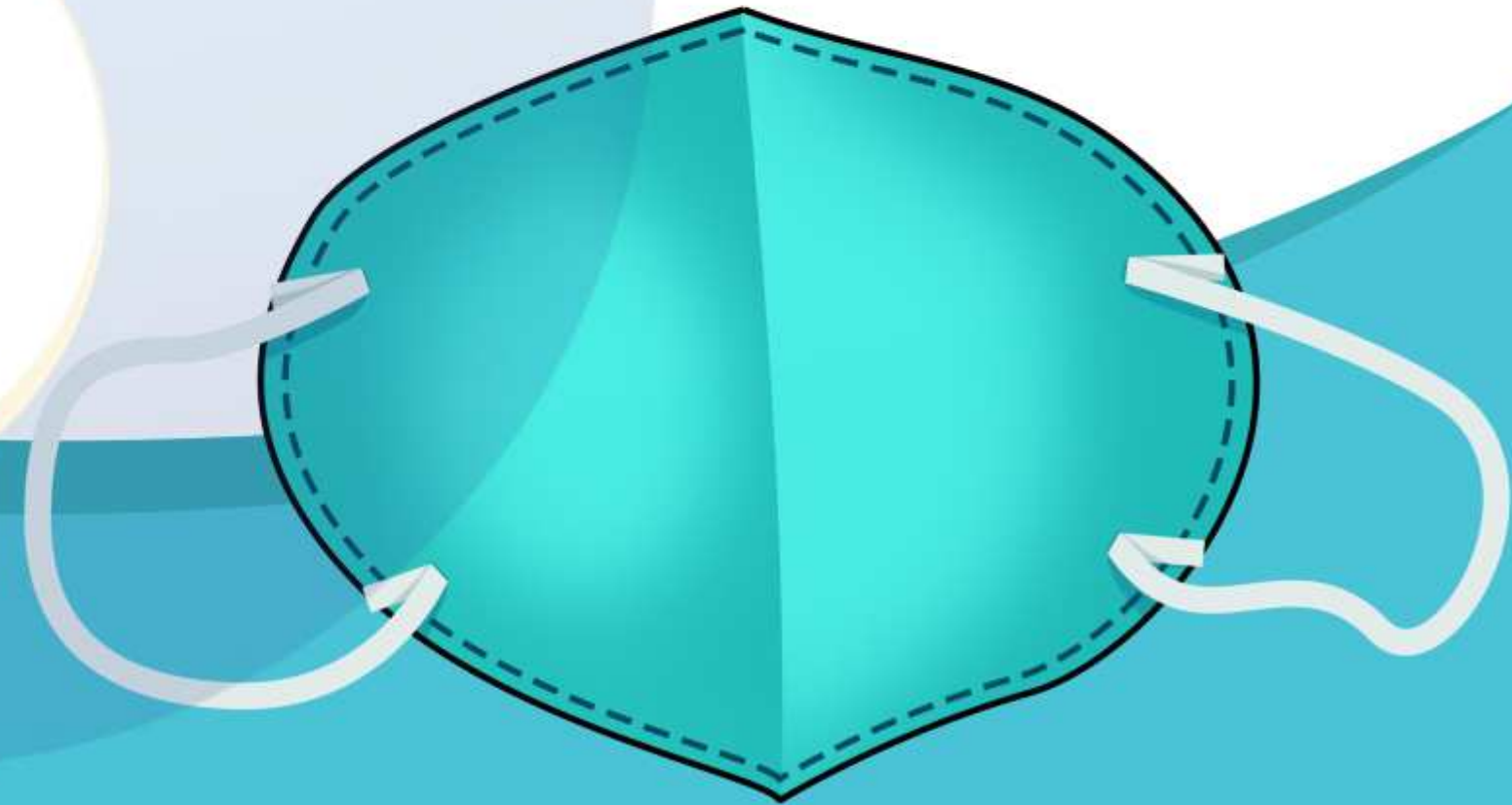
SIPG Launches "Safe Traders, Stable Traders" Stock Market Use Fee Reduction Policy

If the customer applies for the plan of lifting heavy containers (domestic and foreign trade containers) from 12: 00 am on February 2, 2020, the usage fee for the heavy container yard of the incoming container stored at the wharf from January 24 to February 9, 2020 will be exempted, and the specific fee will be reduced or exempted directly when the customer applies for the plan of lifting heavy containers.



PART
PART
02

Introduction of Measures to Facilitate Overseas Donation of Imported Medical Materials



Introduction of Measures to Facilitate Overseas Donation of Imported Medical Materials

- The Ministry of Finance, the General Administration of Customs and the General Administration of Taxation announced No.6 of 2020 to moderately expand the scope of duty-free imported materials and the scope of duty-free subjects stipulated in the Interim Measures for Exemption of Import Tax on Charitable Donations. Imported materials donated for epidemic prevention and control are exempt from import duties, import value-added tax and consumption tax (the implementation period is from January 1 to March 31, 2020)

- Announcement of the General Administration of Customs No.17 of 2020 (Announcement on Handling Customs Clearance Procedures for Imported Donated Materials for Pneumonia Infected by New Coronavirus)
- No.19 [2020] of the General Administration of Customs (Notice of the General Administration of Customs on Full Efforts to Ensure Rapid Customs Clearance of Pneumonia Epidemic Prevention and Control Materials Involving New Coronavirus Infection)
- Announcement of Wuhan Customs on Handling Customs Clearance Procedures for Imported Donated Materials for Prevention, Control and Treatment of New Coronavirus Pneumonia

China's Customs strongly supports and provides convenient and fast import policies.

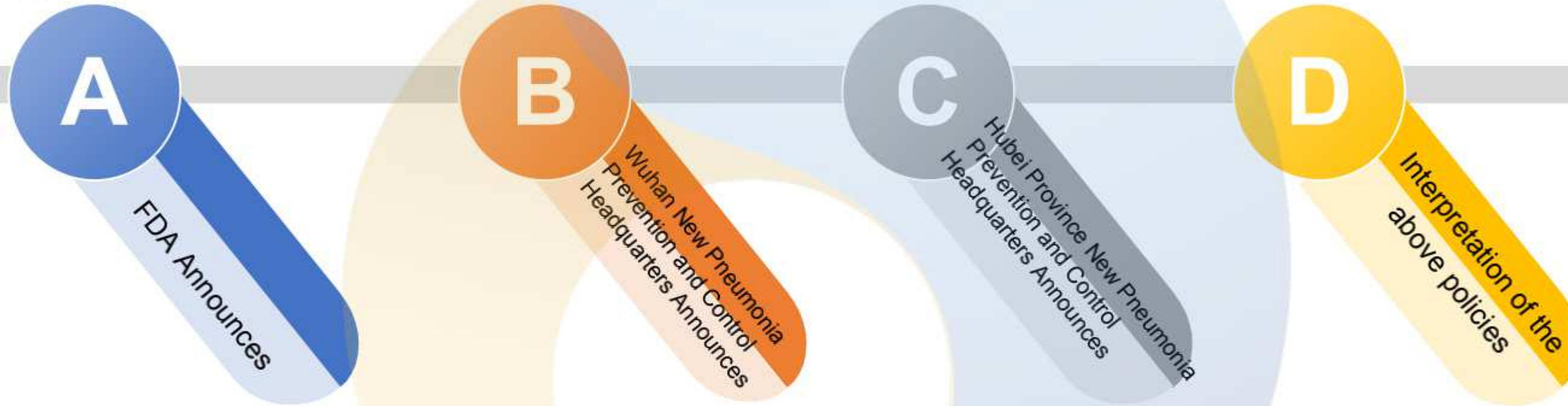
(Some customs policies are listed)

- Notice of Shanghai Customs on Fully Ensuring Rapid Customs Clearance of Materials for Prevention and Control of New Coronavirus Pneumonia Outbreak
- The Shanghai Customs and Commodity Inspection Bureau announced that enterprises do not need to provide toxicological reports when declaring the import of disposable sanitary products. Since January 16, 2020, enterprises do not need to provide toxicological test reports for disposable sanitary products when declaring and inspecting. Customs will no longer review toxicological reports submitted voluntarily by enterprises when inspecting.
- The customs directly under the central government respectively announced the notification of customs clearance consultation telephone numbers for imported donated materials for epidemic prevention and treatment.

Interpretation: In the face of the current epidemic situation, in order to facilitate the import of medical materials into hospitals for use, the customs may first release them based on the certificate issued by the competent department of medicine, which is equivalent to relaxing the examination requirements and does not necessarily require the examination of the "medical device registration certificate"; For donated goods imported in accordance with the Interim Measures for Exemption from Import Tax on Charitable Donated Goods, the customs shall register and release them first in case of emergency, and then go through the relevant formalities for tax reduction and exemption according to regulations.

Introduction of Measures to Facilitate Overseas Donation of Imported Medical Materials

- In order to provide more materials that meet medical standards to medical institutions across the country, major charity organizations, customs and local food and drug administration departments have all worked together to fight against the epidemic.



Opinions of the Department of Medical Device Supervision and Administration of the State Drug Administration on Urgently Importing Medical Devices Not Registered in China (to be implemented from January 27 to the end of the epidemic)

Announcement on Matters Related to Procurement or Donation of Medical Consumables for Epidemic Prevention published by Emergency Support Group of Wuhan New Pneumonia Prevention and Control Headquarters (to be implemented on January 29-the epidemic situation is over)

The Social Donation Group of Hubei Province's Prevention and Control Command for New Type of Coronavirus Infected Pneumonia Released "Procedures for Customs Clearance and Inspection of Donated Materials Received from Abroad during Prevention and Control of Epidemic Situation" (to be implemented from January 31 to the end of the epidemic situation)

Donated materials that belong to medical devices and drugs shall be provided with quality certification letters to the customs when imported. If they cannot be provided, the provincial food and drug administration shall identify them in kind and send them to the provincial quality inspection office for inspection when necessary to ensure that donated medical devices and other materials are safely delivered to the hands of medical personnel and patients.

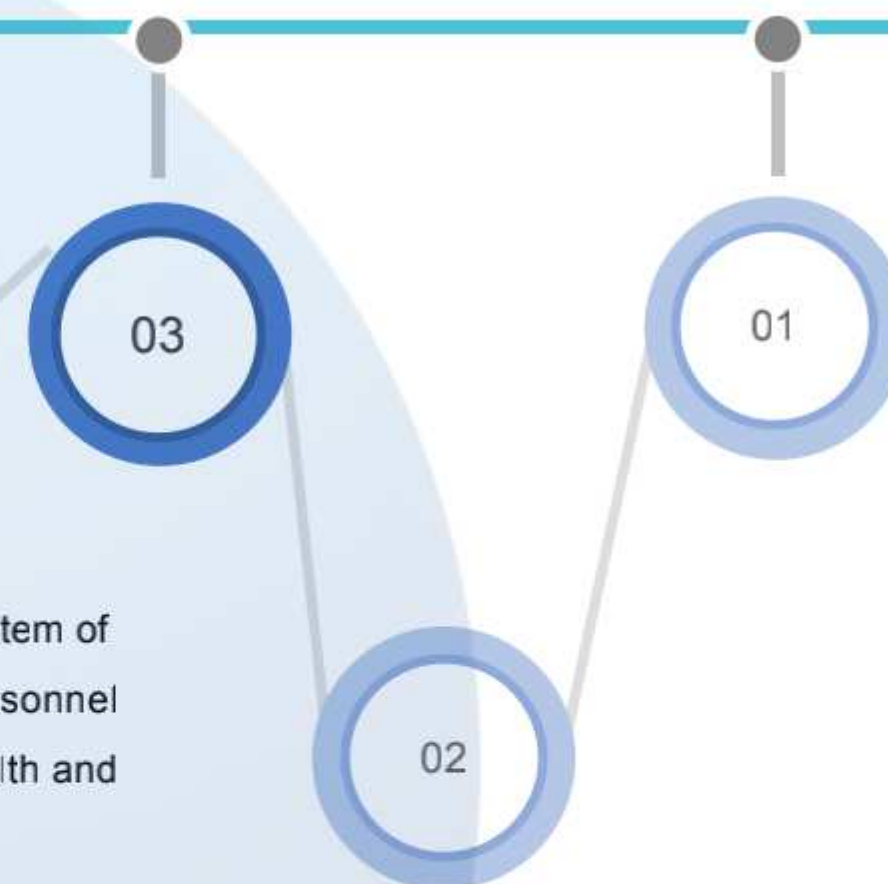
Introduction of Measures to Facilitate Overseas Donation of Imported Medical Materials

In order to prevent the pneumonia epidemic caused by new coronavirus infection and block the possible sources of infection and transmission routes, China's customs and other government departments at all levels have also issued relevant supporting measures.

◆General Administration of Customs Announcement No.16 of 2020 (Announcement on Restarting the System of Filling Health Declaration Cards for Entry-Exit Personnel) Starting from January 25, 2020, entry-exit personnel must make health declaration to the customs health and quarantine department, and cooperate with health and quarantine work such as body temperature monitoring, medical inspection, medical investigation, etc.

◆Announcement of the State Health Committee of the General Administration of Customs No.15 of 2020 (Announcement on Prevention and Control of Pneumonia Infected with New Coronavirus) The State Council of the People's Republic of China has approved the inclusion of pneumonia infected with new coronavirus into the management of quarantinable infectious diseases stipulated in the Frontier Health and Quarantine Law of the People's Republic of China. Starting from January 24, 2020, entry and exit personnel shall promptly report to the entry and exit customs for any discomfort symptoms such as fever, cough, dyspnea, etc. occurring during exit and entry or during transportation. The customs will dynamically adjust the prevention and control measures at ports in real time according to the progress of the epidemic. The announcement shall be valid for 3 months from the date of promulgation.

◆The General Administration of Market Supervision, the Ministry of Agriculture and Rural Areas and the State Forestry and Grass Administration No.4 of 2020 (Announcement on Prohibition of Wildlife Trading) banned wildlife trading activities from January 26, 2020 until the national epidemic situation is lifted in order to prevent the pneumonia epidemic caused by new coronavirus infection and block the possible sources of infection and transmission.



PART
03

Introduction to Key Points of Import Clearance of Donated Materials



Declaration Elements and Tax Rates

Material Name	Commodity No.	Declaration Element	Most Favoured Nation Tariff Rate	VAT Rate	Impose Tariff Rates on US (Except for donated materials)
Mask	63079000	brand, ingredient content	6%	13%	36%
Goggles	90049090	brand, purpose, type (discoloration, etc.), model	7%	13%	32%
Protective clothing	62101030	Weaving method [weaving, etc.], category [jacket, trousers, shorts, etc].: category [men's, women's], composition content, brand name [Chinese and foreign name]	8%	13%	38%
Vulcanized rubber gloves	40151900	Uses, brands, ingredients [gum content], specifications [S, M, XL, etc]	10%	13%	35%

Tax collection methods for enterprises' own use

Enterprises importing epidemic prevention materials for their own use shall provide an enterprise undertaking in addition to the conventional consignment note, invoice and case list, promising that the materials are non-medical, and the customs may inspect the goods before release to determine the name, composition, model and whether they are non-medical.

Tax method for sales purposes

If a foreign trade enterprise imports goods for OTC sales, the importing enterprise must have all kinds of medical certificates, including medical device registration certificate, medical device registration certificate, medical device business license, etc. The customs cannot register and release the goods with reference to donated goods.



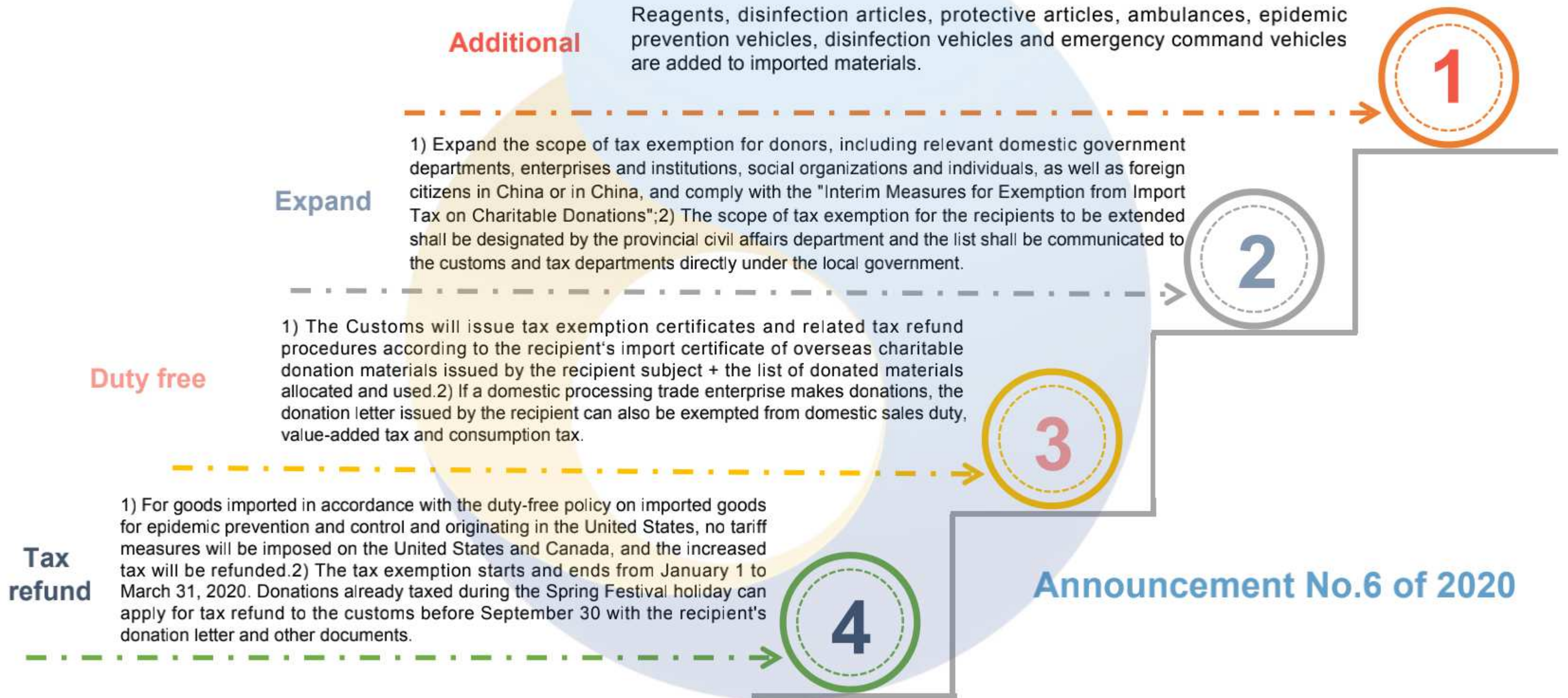
Donate goods

The recipient can issue a letter of commitment, promising to go to the Food and Drug Administration for quality inspection according to the requirements of the drug administration department before use, and use it after passing the inspection. After the customs records and releases, the donee shall present the overseas medical device listing certificate, overseas inspection report, product quality and safety undertaking, description of the product according to local standards or substantial equivalence with domestic products, product label and instructions (all the above documents shall be provided in Chinese) to the food and drug administration for relevant certificates. If the inspection results do not meet the medical standards, they shall not be used for medical purposes.

Personal goods mailing method

Medical supplies (including masks, goggles, etc.) mailed in personal names do not exceed RMB 1000 yuan. After overseas purchase, they can be directly sent to relatives and friends in China. The recipients can write their names in Chinese pinyin correctly. The consignee on the face sheet or waybill must write the name of the consignee or the pinyin spelling or English name of the company.

Interpretation of "Announcement on Tax Exemption Policy for Imported Materials in Prevention and Control of Pneumonia Infected by New Coronavirus"

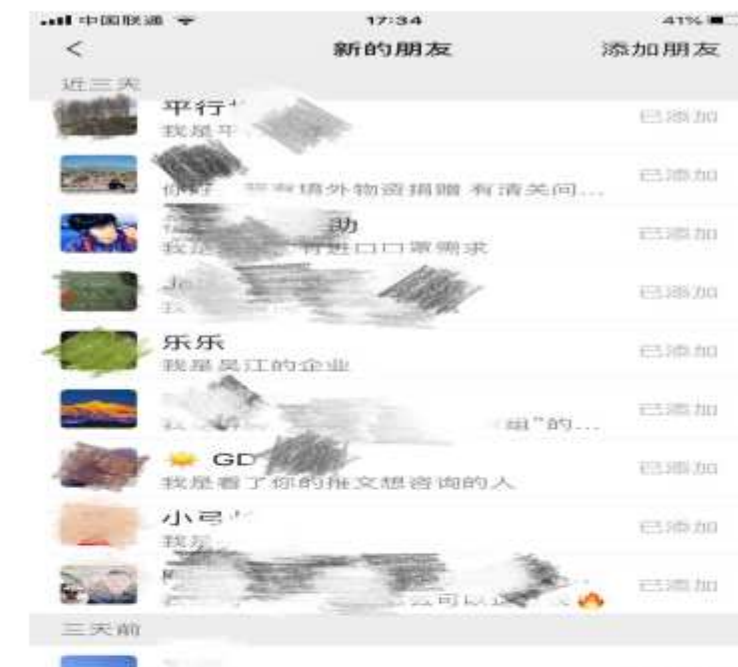


PART
04

Xinhai Provides Free Customs Clearance and Consultation Channels for Donors



Xinhai Provides Free Customs Clearance and Consultation Channels for Donors



01 Communicate donation matters day and night

02 Xinhai Wang Chengdong focuses on customs clearance of donated materials

03 Nearly 200 cases of medical supplies arrived smoothly after traveling day and night

04 Free consultation on customs clearance matters

- On January 28, Shanghai Xinhai Customs Brokerage Co., Ltd. and Shanghai Hub International Trade Co., Ltd. with the active help of Shanghai Customs and PVG Customs, quickly completed a batch of customs clearance and foreign trade services for 2,317 N95 masks sent from the United States. Wang Chengdong of Centralism Single Center declared emergency supplies at home.

- In order to ensure accurate and efficient docking of medical resources at home and abroad and unimpeded entry of rescue materials, Xinhai also makes use of the overseas logistics network of Oujian Group and abundant domestic and foreign supplier resources to give full play to the advantages of digitalization and Internet, actively allocate resources from all parties in relevant departments, ensure smooth customs clearance and transportation of rescue materials, and provide one-stop services.

Xinhai Provides Free Customs Clearance and Consultation Channels for Donors



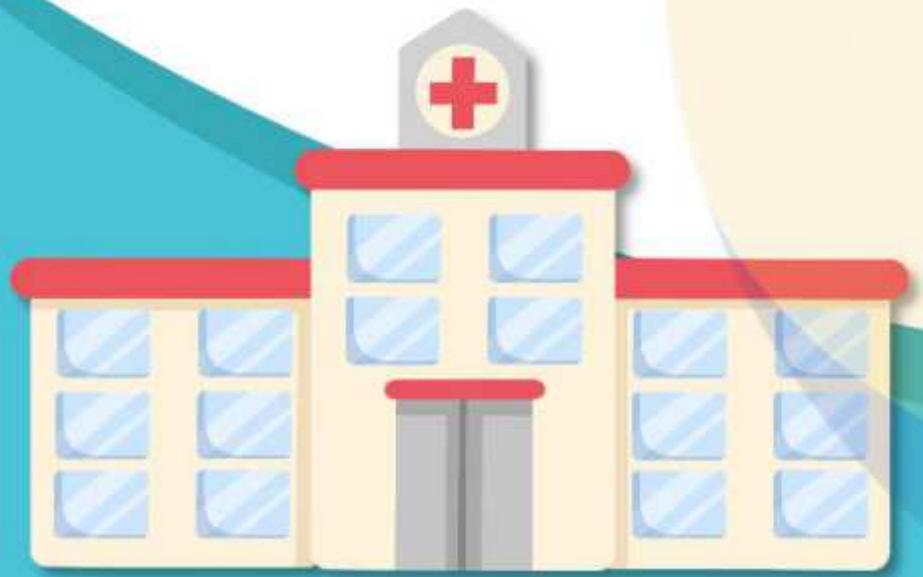
Shanghai Xinhai Customs Co., Ltd. and its group company Oujian Network will spare no effort to provide agency customs clearance and logistics services for donations imported from Shanghai ports for Wuhan's new coronavirus.



Dear caring persons, if you have donations of epidemic prevention materials that need customs clearance and logistics services, please contact us: 400 990 0851. In the face of the epidemic, we will unite as one!



The above data will end at 10 pm on February 2, 2020



The contents of the policy in this article are derived from official channels: the website of the General Administration of Customs, the websites of customs directly under the customs, and Wuhan release.